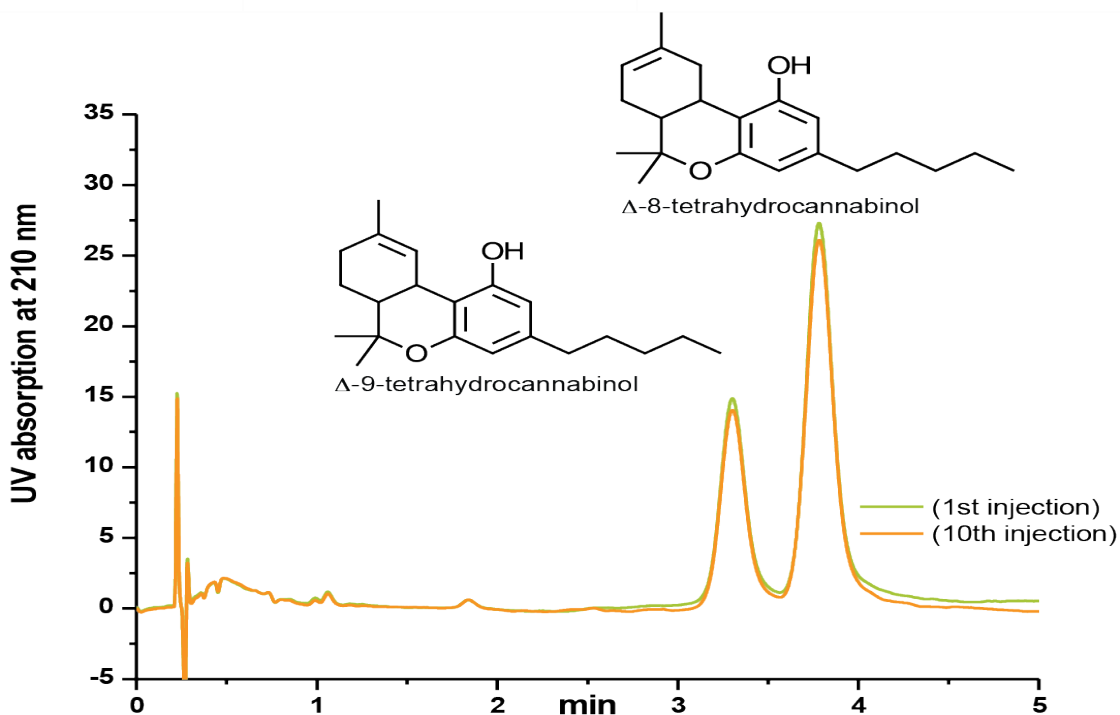


## Flare C18 Mixed-Mode Column

### HPLC Conditions

Column Name:	Flare C18 Mixed-Mode
Column Dimensions:	4.6 x 33mm
HPLC System:	Agilent 1290 Infinity Series
Injection Volume:	0.5 $\mu$ l
Detection:	UV at 210nm
Flow Rate:	1ml/min
Mobile Phase:	410ml H <sub>2</sub> O + 440ml MeOH + 150ml methyl-t-butyl ether
Temperature:	45 °C
Analytes:	1. $\Delta^9$ -tetrahydrocannabinol 2. $\Delta^8$ -tetrahydrocannabinol



### Notes

$\Delta^9$ -tetrahydrocannabinol is the most notable cannabinoid and the primary ingredient in cannabis.  $\Delta^9$ -THC and  $\Delta^8$ -THC are isomers that differ only in the position of a double bond. A short 4.6x33 mm Flare C18 mixed-mode column is able to baseline resolve these important analytes in less than 5 minutes. With new US regulations and increasing consumer interest, this separation is of high importance.

*Acknowledgement: Relevance of separation suggested by Dr. W. Brent R. Pollock, PhD, Prairie Plant Systems Inc.*