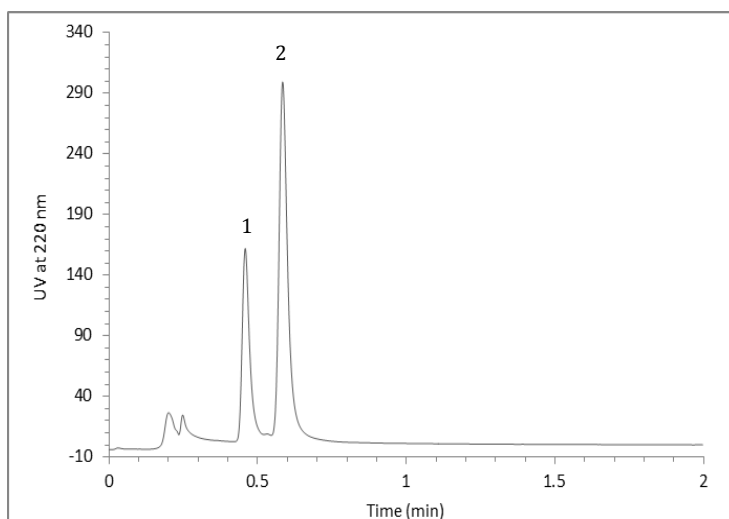


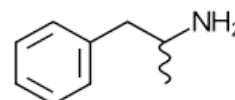
FLARE C18 MM Column: Separation of Amphetamine & Methamphetamine

HPLC Conditions

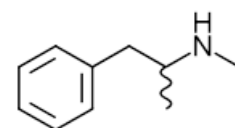
Column Name:	FLARE C18 MM
Column Dimensions:	4.6 x 33 mm (15398-4)
HPLC System:	Agilent 1200
Injection Volume:	2.0 µl
Detection:	UV at 220 nm
Flow Rate:	1.0 ml/min
Solvents:	A: 50 ml ACN, 950 ml H ₂ O, 2.2 g K ₃ PO ₄ ·6H ₂ O B: 1,000 ml ACN
Elution Method:	Isocratic 65% A/ 35% B
Temperature:	45 °C



1. Amphetamine



2. Methamphetamine



Notes

Substituted amphetamines are occasionally used in drug formulations but commonly as drugs of abuse. They have been used for the treatment of attention deficit hyperactivity disorder (ADHD), sleep disorders, obesity and other ailments. For recreational use, they are quite addicting with potential severe side-effects such as psychosis and cerebral hemorrhage. They are monitored by drug enforcement agencies and are classified in most countries as schedule I or schedule II controlled substances.

References

1. Nestler EJ (December 2012). "Transcriptional mechanisms of drug addiction". *Clin. Psychopharmacol. Neurosci.* 10 (3): 136–143. doi:10.9758/cpn.2012.10.3.136.PMC 3569166. PMID 23430970.
2. O'Connor, Patrick. "Amphetamines: Drug Use and Abuse". *Merck Manual Home Health Handbook*.
3. www.wikipedia.org